

Questionnaire Application

This application was designed to allow database managers to select the databases on a server that they considered their responsibility and to answer a short survey about the particular database.

To select the databases, the system used a javascript popup utility provided by the client which was slightly modified at the time. This allowed the user to select multiple databases by database title from the catalog.nsf database on the server.

Each database then was the subject of an individual survey.

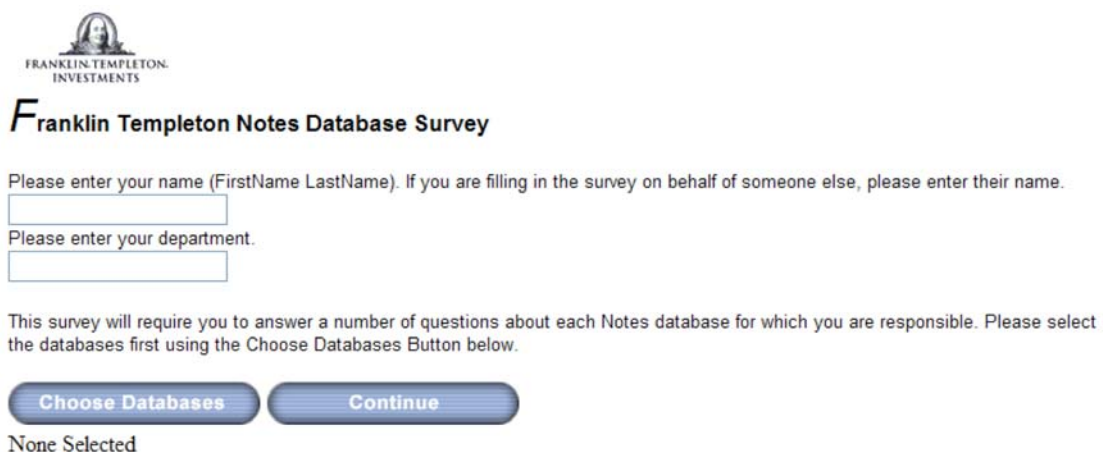
The system allowed the creation of surveys with questions of various forms. The administrator would type in the question and the type of field and any choices for the answer. For example, they could prompt “Is this database accessed via the Notes Client and/or the Browser?” and the possible answers could be “Notes Client”, “Browser” or “Both” selected using a radio button. The questionnaire was dynamically created using a LotusScript Web Query Open agent at the time the user was filling it in. Once the user had finished they would go onto the next database.

The ability to create web surveys in this way and then transfer responses into another application such as an Excel spreadsheet has many potential applications.

To start with the user would be sent a URL in the mail such as:

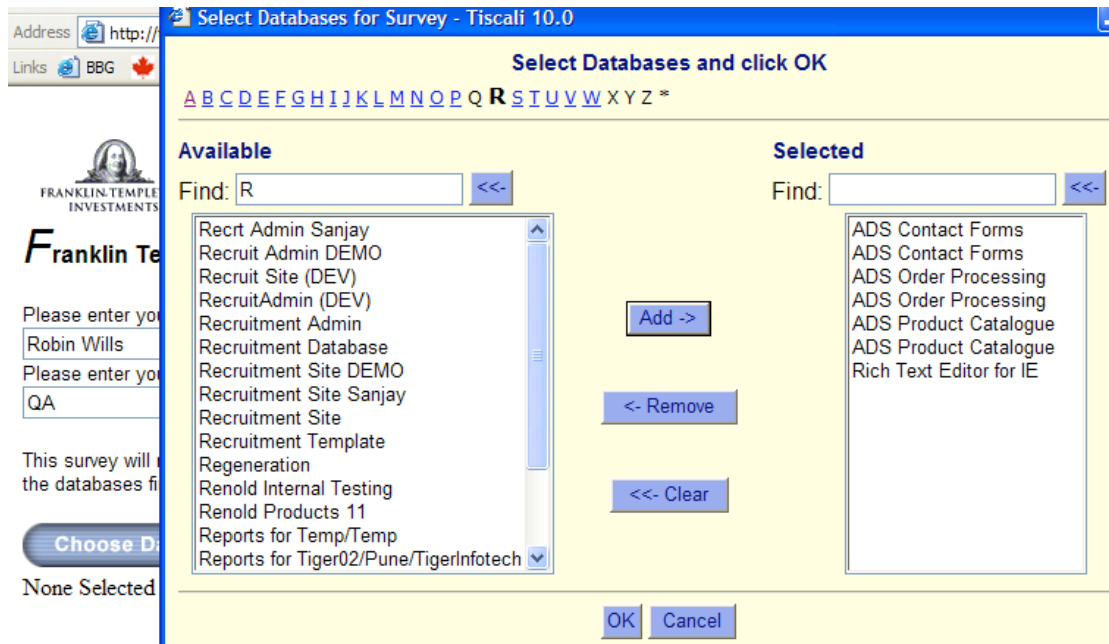
<http://www.yourcompany.com/amir/survey.nsf/Survey?OpenForm&Quest=NotesDBSurvey>

Notice how the actual survey is defined in the URL. The user would then see the form below.



The screenshot shows the top portion of a web survey. At the top left is the Franklin Templeton Investments logo, which includes a portrait of Benjamin Franklin and the text "FRANKLIN TEMPLETON INVESTMENTS". Below the logo is the title "Franklin Templeton Notes Database Survey" in a large, bold, serif font. The form contains two text input fields: the first is labeled "Please enter your name (FirstName LastName). If you are filling in the survey on behalf of someone else, please enter their name." and the second is labeled "Please enter your department.". Below these fields is a paragraph of instructions: "This survey will require you to answer a number of questions about each Notes database for which you are responsible. Please select the databases first using the Choose Databases Button below." At the bottom of the form are two blue, rounded rectangular buttons: "Choose Databases" and "Continue". Below the buttons, the text "None Selected" is displayed.

First the user would have to enter their name and department. This particular application didn't require the user to login although this could easily have been done also.



This shows the javascript popup utility for selecting databases from the database catalogue that the user considered his/her responsibility.

To view or edit the actual database survey data, follow the associated links below. The survey is not complete until all the databases below have the Survey Complete flag set to "Y".

Notes Database Title	Survey Complete	Start Survey	View	Delete
ADS Contact Forms	No X	Start Survey	View	Delete
ADS Contact Forms	No X	Start Survey	View	Delete
ADS Order Processing	No X	Start Survey	View	Delete

This shows the user's list of databases and the status of the survey for each one. In this case, none of the surveys are complete.



Franklin Templeton Notes Database Survey

Name: Robin Wills, department: QA

Survey is related to the following Lotus Notes Database (which may exist on other servers also).

Database Title	ADS Contact Forms
Database Server	Tiger02
Database Pathname	TigerDev\adscontactform.nsf
Database created on	21/06/2002

Thank you for agreeing to complete this survey for each of the Notes Databases that you are responsible for.

1. Number of Users of the database ?

1-10 ▼

2. Main location of the application?

New York ▼

3. Highlight the Functions of the app?

- Research
- Portfolio Management
- Trading
- Performance
- Attribution
- Compliance
- Confirmation & Settlements

As you can see, the questions are displayed within one page and look as if the form has been developed specially whereas the questions have just been created in a web browser.